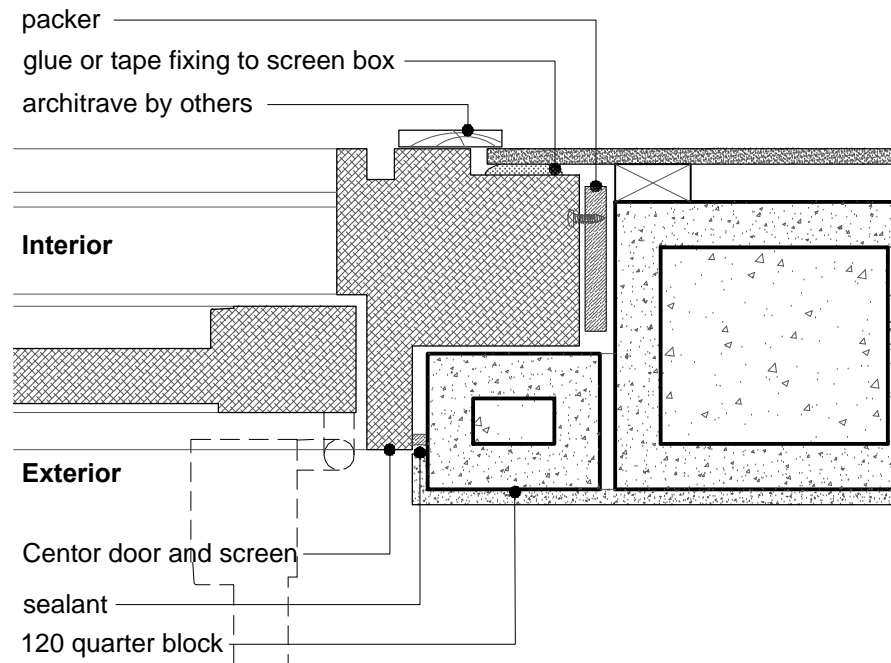
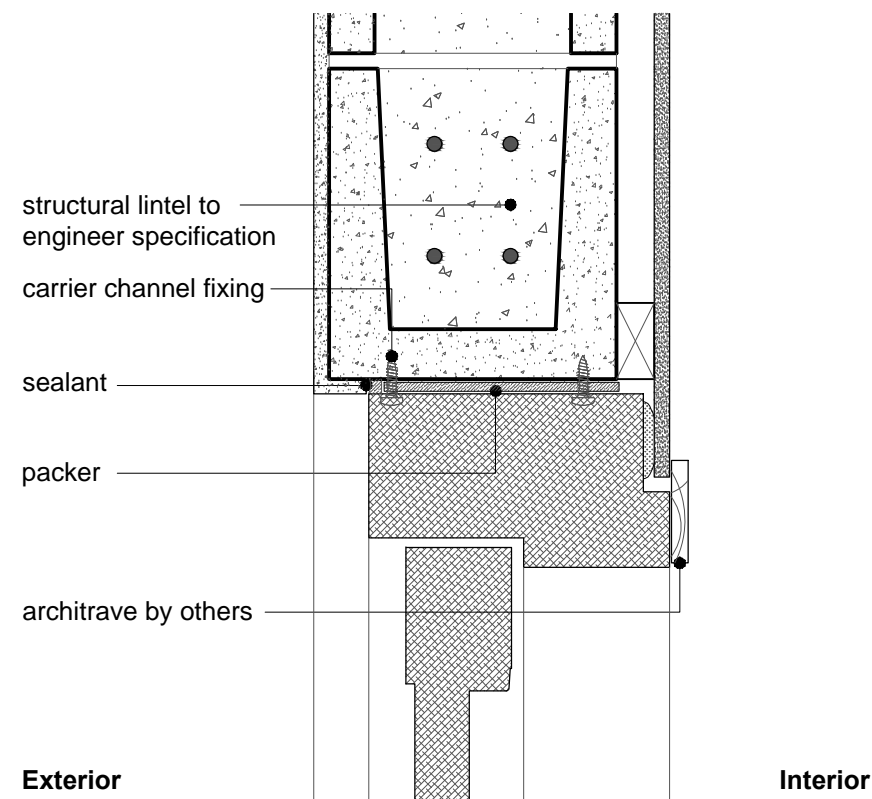


do not fix into screen box due to risk of damage to screen/blind inside



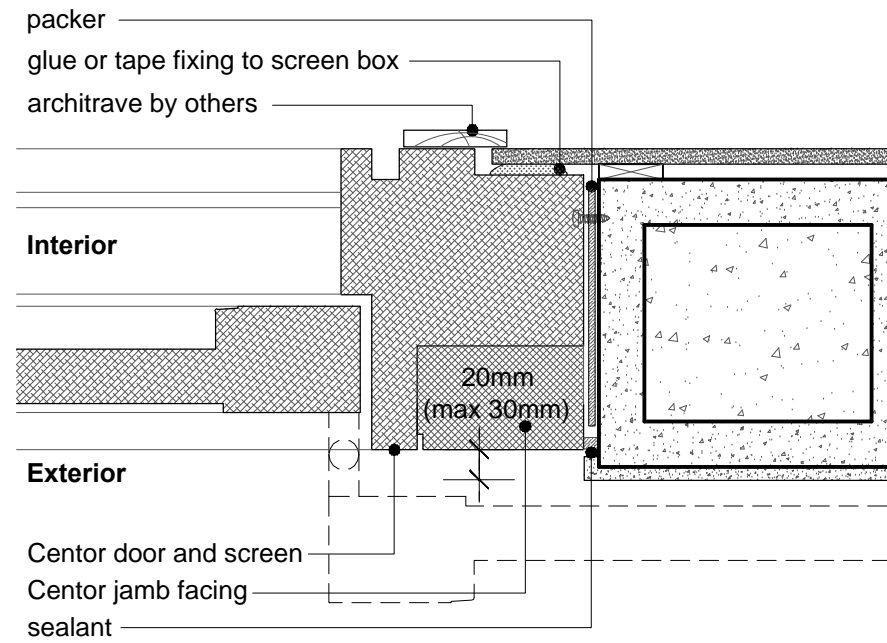
1. jamb detail - (90 deg door swing)



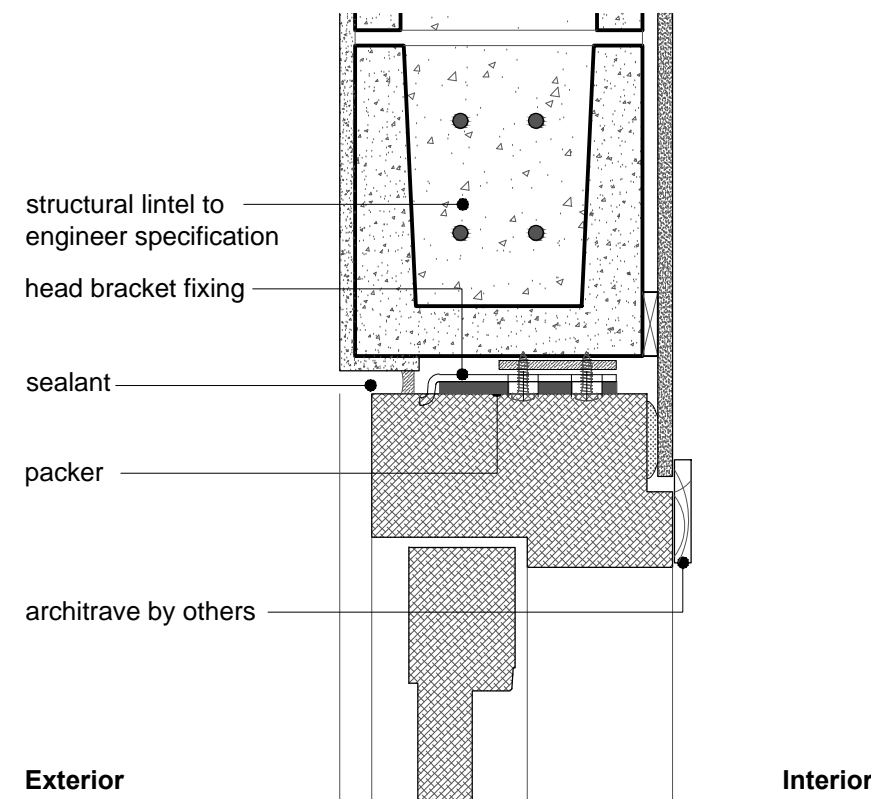
2. head detail - (90 deg door swing)

NOTE: Structural lintels should be in fabricated and installed in accordance with certified engineer's specifications. Steel lintels are strongly recommended for openings wider than 3600mm. For further information on lintel design refer Centor's Engineering Design Guide.

do not fix into screen box due to risk of damage to screen/blind inside

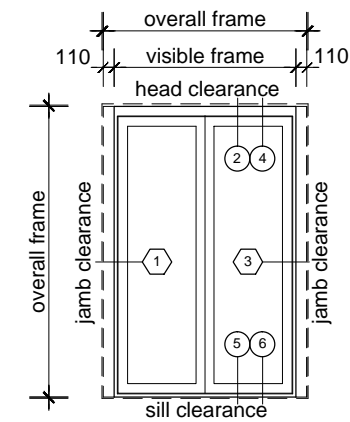


3. jamb detail - (180 deg door swing)



4. head detail - (180 deg door swing)

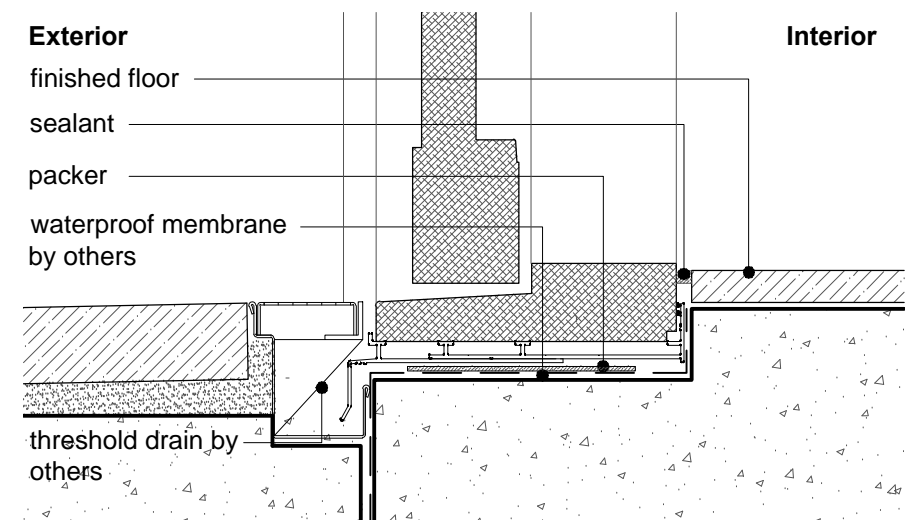
NOTE: Structural lintels should be in fabricated and installed in accordance with certified engineer's specifications. Steel lintels are strongly recommended for openings wider than 3600mm. For further information on lintel design refer Centor's Engineering Design Guide.



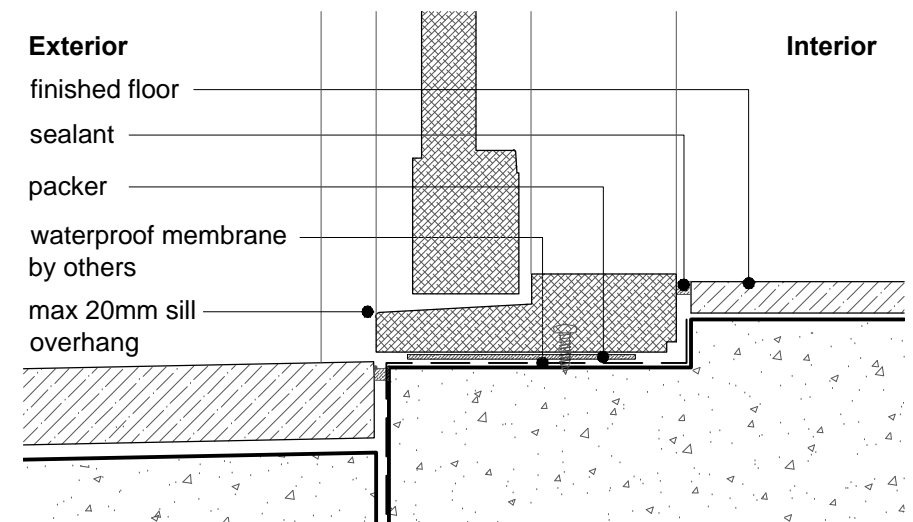
elevation key

	head fixing option	
	through carrier channel	through head bracket
head clearance	10mm	25mm
sill clearance	10mm	10mm
jamb clearance	10mm	10mm

typical rough opening clearances



5. sill detail



6. sill detail